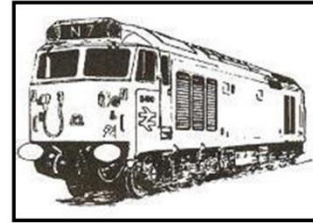
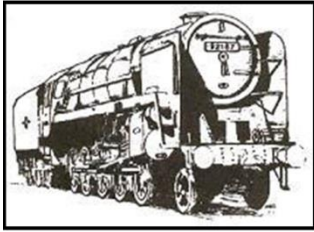


## OXFORDSHIRE RAILWAY SOCIETY



SEPTEMBER 2021



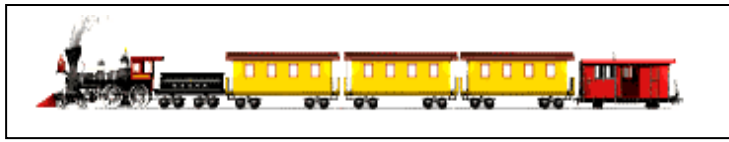
On September 8th David Brace, who has visited us previously from Basingstoke & District Railway Society, will be delivering a Zoom talk on **Decarbonising Our Railway System**. *The illustration above shows The University of Birmingham's impression of its HydroFLEX train whose trials have included running on the Cotswold line.* You can join us using the link

<https://us02web.zoom.us/j/81296982350?pwd=aE1ZdTRZdWlpSVVBBeG1rc2ZBOG5mUT09#success>

Your Committee hopes we can resume indoor meetings in October but finding a venue is proving troublesome at present – more news when we have it.



*The picture left shows IETs on test at Swindon in autumn 2017 before the wires were up here.*



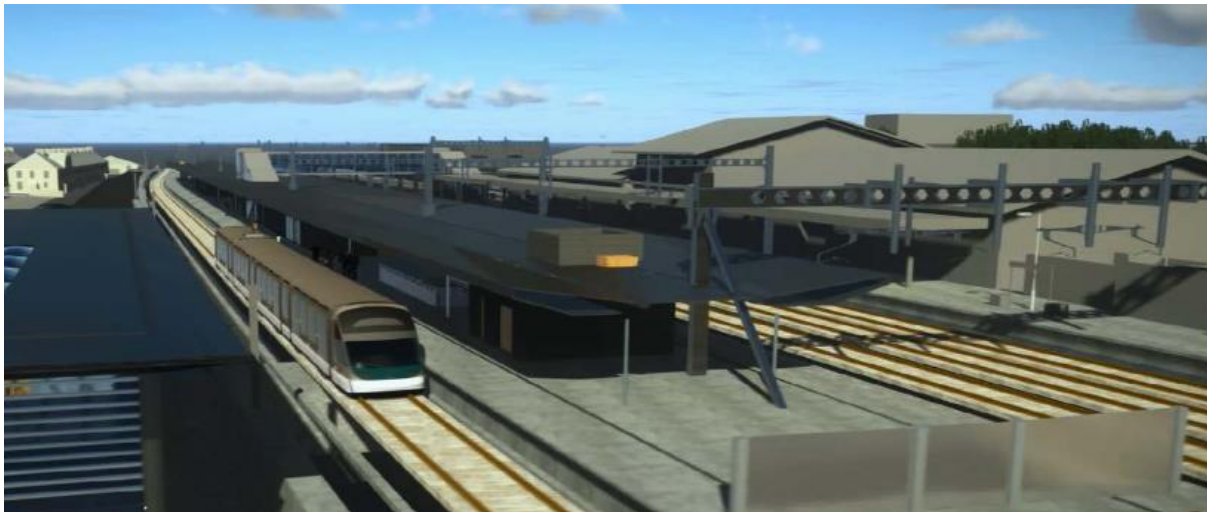
## OXFORDSHIRE RAILWAY SOCIETY

### LOCAL NEWS



In July, class 387/2 Gatwick Express units, surplus to immediate requirements due to air travel restrictions, were moved to Great Western at Reading to help cover while the class 80X Hitachi units go through repairs following underframe component cracks found in May. 387 205 is seen formed in a local service at Didcot during August. At the end of July, Network Rail applied for prior approval from the City Council for the latest proposed changes to Oxford

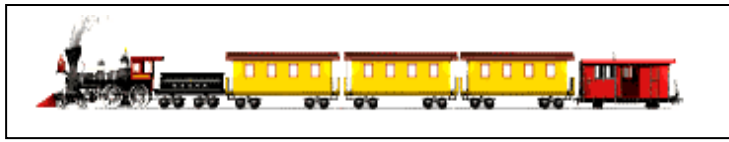
station. These concentrate on the down side with an extra platform and a new subway entrance from Botley Road (which is to be lowered further under the railway bridge) with the existing Youth Hostel and current platform buildings on that side demolished. One concept drawing shows a street-level entrance building with what appears to be a 'living' green roof. NR's image below shows a view of the intended platform 5 looking north across Botley Road; the train might best be described as imaginative. This Platform 5 should not be confused with the new café/bar of that name at the Royal Oxford Hotel!



Passive provision is to be made for a further loop line on the up side which would appear to require demolition of the existing main station building. Meanwhile, work on major passenger improvements at Reading West station has begun and Southall has a new glass booking hall with step-free platform access.

### THE OTHER PLACE

In June, Network Rail submitted a Transport and Works Act Order application for a new four-platform station at Cambridge South on the London main line which would be shared by East West Rail trains from and to Oxford. The station is adjacent to Cambridge Biomedical Campus and AstraZeneca have partnered in its promotion. Due to open in 2025, it will give Cambridge three stations.



## OXFORDSHIRE RAILWAY SOCIETY

### DIDCOT NEWS



the North Yorkshire Moors Railway (which, by the way, celebrates 175 years of steam traction this

month). Behind her in the lower picture is 4079 *Pendennis Castle* being prepared for a return to (light) steam at the end of the month, although a full relaunch may have to wait until next season. She last steamed (in Australia) in 1994, and was last seen in steam at Didcot in 1977. The components of 2-8-0 4709 have now moved to Tyseley Locomotive Works.



### COMING EVENTS

**Wednesday 8 September:** 09:00pu  
Oxford: Saphos Trains: *Severn*

*Valley Enterprise* Paddington–Bridgnorth: 34046 or alternative

**Weekend 18–19 September:** Gloucestershire Warwickshire Railway: Laurence Fish railway poster art display

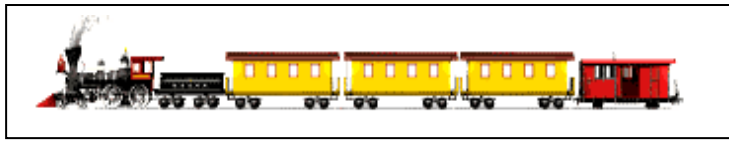
**Saturday 25 September:** Vintage Trains/SLS: Tyseley–Swindon, return via Oxford & Banbury: 5043 or 46233

**Sunday 26 September:** 12:00arr Oxford: Steam Dreams: Paddington–Oxford & afternoon circular from Oxford Parkway: 60103

**Saturday 2 October:** Vintage Trains: Return to Steam 50th Anniversary Special: Tyseley–Hereford – Swindon–Didcot, return via Oxford & Banbury: 7029

**Anniversary:** 10 September is the 150th anniversary of the birth of Charles B. Collet in 1871.

**Easyfundraising:** Total raised for the Society now stands at £675.77 – thanks to all who support it.



## OXFORDSHIRE RAILWAY SOCIETY

### SEPTEMBER QUIZ

1. The overhead-wire light rail systems in Croydon, Edinburgh, Manchester, Nottingham, Sheffield and West Midlands all operate on the same voltage – what is it?
2. What item of railway equipment was invented by the Norwegian Per Pande-Rolfsen?
3. The miniature locomotive designer Lillian “Curly” Lawrence wrote under the initials of the railway he had once worked for – which?
4. BR Class 47 diesels were built by which two works?
5. From 1921 until closure, all the steam locomotives of the Sligo, Leitrim & Northern Counties Railway were to the same wheel arrangement: what was it?
6. What colours did the Maryport & Carlisle Railway paint its locomotives and its carriages respectively?
7. What is notable about the unstaffed halt of Tanggula in Tibet?
8. Which was a Coligny-Welch indicator used for?
9. Which narrow gauge railway had the ‘Where the Rainbow Ends Café’ at its terminus?
10. How many Great Northern Railway locomotives are preserved?
11. In what year were the last Class 52 ‘Westerns’ withdrawn?
12. What traction now operates over the former BR Seaton branch in Devon, and on what gauge?
13. Which rolling stock builder was located at Washwood Heath?
14. GNER 91 023 was involved in which two major accidents?
15. Which railway, other than the SER, had its main terminus at a Cannon Street station?
16. Where did BR’s diesel locomotives of Class 01 work – and what was unusual about this location?

*Answers next month*

*“Buffer Stop” is edited by **Matthew Searle** <[matthew904@btinternet.com](mailto:matthew904@btinternet.com)> (who also took the unacknowledged pictures) and published by the Oxfordshire Railway Society; the views therein are not necessarily those of the Society; events may change. **Closing date for next issue: 1 October***